



Artificial reef trivia



Q1. What is an artificial reef?

A. Artificial fish reef is "Fish apartment" artificially made of concrete, iron, etc., utilizing the habit of gathering fish in the shadow.

In the old days, there was a record of sinking a lot of stones to make them artificial reefs, and they were installed in the sea nationwide as national, prefectural, and municipal project from around 1975.

There is also a breeding reef to create "seaweed bed". The "seaweed bed" serves as a spawning ground for fish and a hiding place for juvenile fish.



Epinephelus bruneus



seaweed bed

Q2. What happens when you install in the sea?

A. If you install an artificial reef on the seabed of empty sand or mud, various fish will gather in a few months.

The collected fish are caught by fishermen with angling, longline, gill nets, etc., and be served on everyone's table.

Q3. What kind of fish do you collect?

A. It has been said to have more than 120 types of fish that gather on artificial reefs.

There are various ways of gathering fish due to differences in ecology. Such as that stick to the artificial reef, that swim near the artificial reef, that swim in the middle layer away from the artificial reef, and that gather on the seabed around the artificial reef.

In addition to fish, there are also crabs, shrimp, squid, octopus, and etc.



Seriola quinqueradiata



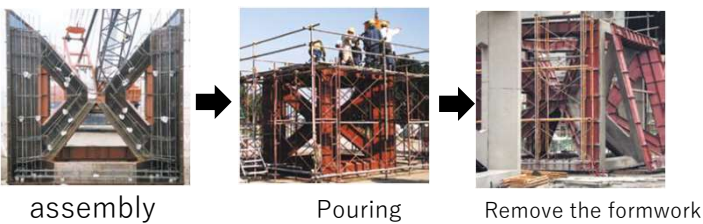
Pagrus major



Paralichthys olivaceus



Chionoecetes opilio



Q4. How are artificial reefs made?

A. In the case of concrete artificial reefs, first, the frame is assembled with reinforcing bars and the formwork is assembled.

Next, pour concrete into the formwork and harden it, then remove the formwork to complete.

When installed on the seabed, it will be used as a "Fish apartment". They vary in height from about 1m to over 10m. Sometimes artificial reefs are stacked large mountain group of reefs.

These artificial reefs are used properly according to the application such as the area and purpose, the type of fish you want to catch, and the depth of water to be installed.



「Fish apartment !」

(Trachurus japonicus on the artificial reef)